

## **PRODUCT BROCHURE**

### **HELPFUL TIP!**

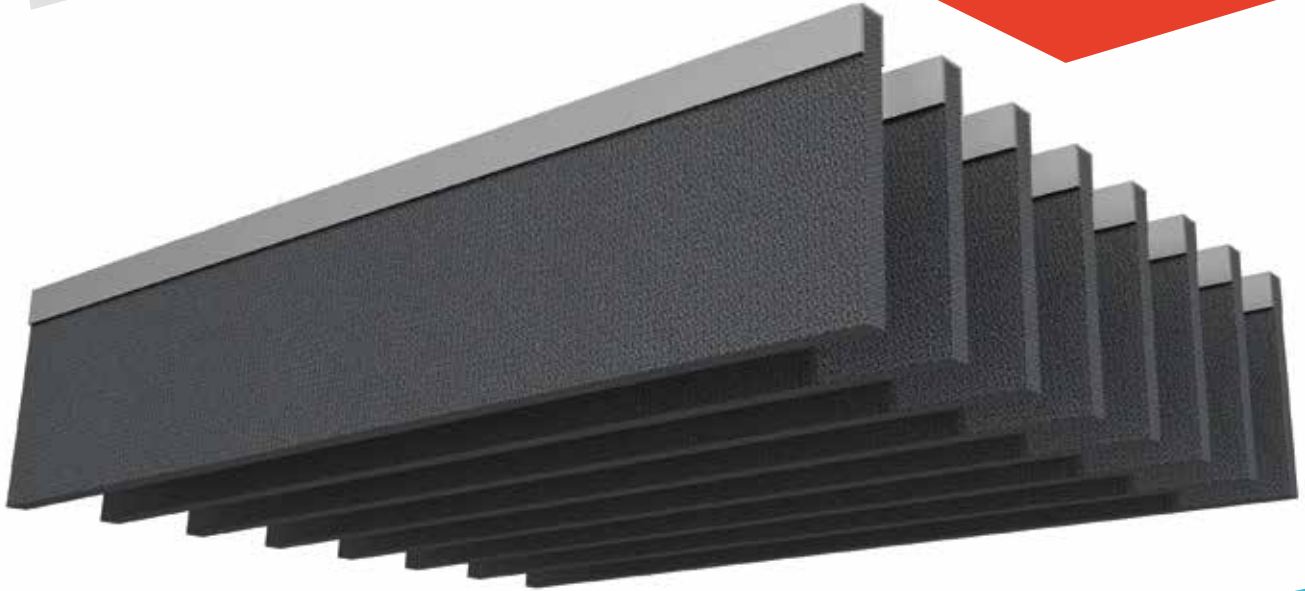
Rafts, baffles and lattices are a perfect acoustic solution for when wall space is limited and or when the room is very large. The big difference between a wall panel and the list above is that all sides are exposed, increasing the ability to absorb sound.



# **RAFTS, BAFFLES & LATTICES**

**| BATTLING POOR ACOUSTICS FROM ABOVE**

# ALPHA BAFFLES



CONTACT US FOR COLOUR OPTIONS



## STANDARD SIZE

1200mm x 300mm x 12/24mm  
2400mm x 300mm x 12/24mm

MAX: 2700mm x 600mm

## STANDARD SHAPES

### 01. OCEAN



### 02. RECTANGLE



## 01 | ALPHA BAFFLES

Alpha Baffles are manufactured from recycled PET bottles! We help to turn old bottles into 12mm, 24mm & 50mm acoustic baffles. Choose from a selection of standard designs and sizes, or create your own by taking advantage of our CNC cutting equipment and UV printing facility. Alpha baffles use a Tech Rail suspension system that includes a rail and two fixings for a quick and easy installation.

## TECHNICAL DATA

**FIRE SPECIFICATION:** EN13501-:2007+A1:2009 B - s1, d0

**COMPOSITION:** 100% RECYCLABLE PET FIBRE

**DENSITY:** 12mm 2.4KG/M2 - 24mm 4.8KG/M2

**ACOUSTIC PERFORMANCE:** CLASS A

## RECOMMENDED SPACING

We recommend 100mm / 200mm / 300mm spacing between baffles. For acoustic data, please contact sales.



"We exist to design, manufacture and supply the future of interior acoustic products."



[sales@techmaterials.co.uk](mailto:sales@techmaterials.co.uk)



[www.techmaterials.co.uk](http://www.techmaterials.co.uk)

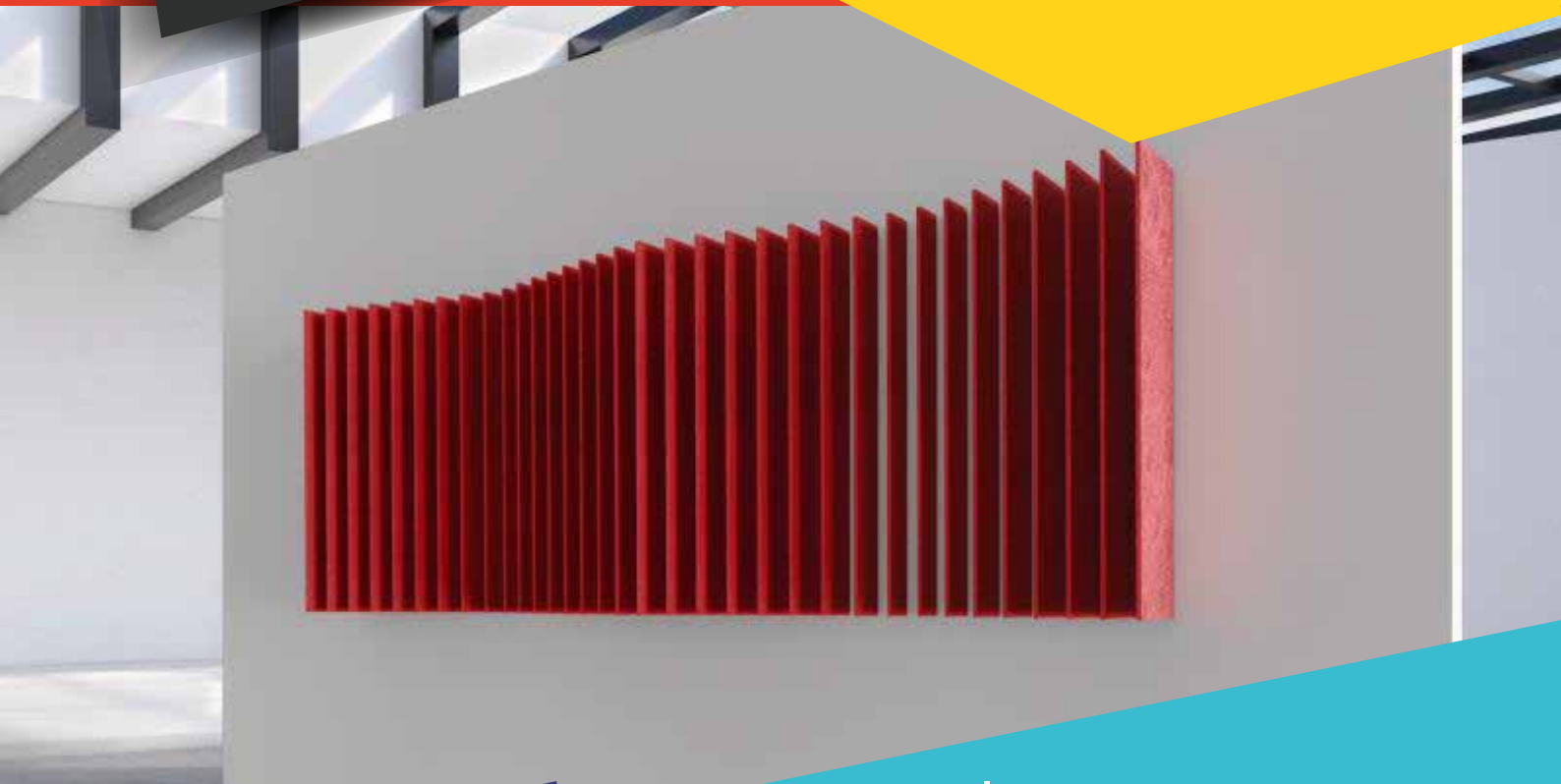


+0044 01952 947390



Telford, Shropshire, TF7 4QP

# ALPHA FINS



## 02 | ALPHA FINS

Alpha fins are made from PET panels which are 100% recyclable and lightweight. Fins are available in both 12mm and 24mm thickness providing the design flexibility to reduce echo and reverberation with innovative acoustic design. Acoustic fins can be cut, printed and formed into endless designs. Perfect for wall and ceiling finishes either as a highly functional acoustic solution or as a bespoke installation.

### STANDARD SIZE

1200mm x 150mm x 12/24mm  
2400mm x 150mm x 12/24mm

MAX: 2750mm x 300mm

### STANDARD SHAPES

#### 01. OCEAN



#### 02. RECTANGLE



### TECHNICAL DATA

**FIRE SPECIFICATION:** EN13501-:2007+A1:2009 B - s1, d0

**COMPOSITION:** 100% RECYCLABLE PET FIBRE

**DENSITY:** 12mm 2.4KG/M2 - 24mm 4.8KG/M2

**ACOUSTIC PERFORMANCE:** CLASS A

### RECOMMENDED SPACING

We recommend 50mm / 100mm spacing between fins.  
For acoustic data, please contact sales.



"We exist to design, manufacture and supply the future of interior acoustic products."



[sales@techmaterials.co.uk](mailto:sales@techmaterials.co.uk)



+0044 01952 947390



[www.techmaterials.co.uk](http://www.techmaterials.co.uk)



Telford, Shropshire, TF7 4QP

# ABSROB RAFTS









CONTACT US FOR COLOUR OPTIONS



## STANDARD SIZE

1200mm x 1200mm x 50mm  
2000mm x 1200mm x 50mm  
2400mm x 1200mm x 50mm

## STANDARD SHAPES

- |  |   |   |
|--|---|---|
| 01. CIRCLE   | 02. RECTANGLE   | 03. CROSS   |
|  |  |  |
| 04. HEX  | 05. TRIANGLE  | 06. SQUARE  |
|  |  |  |

## 03 | ABSORB RAFTS

Absorb hanging rafts are a high-quality Class A acoustic absorber. Rafts are excellent at battling reverberation and echo and should be suspended directly above the noise source for optimal performance. The Absorb panel core is an open-cell PET panel which is lightweight and easy to suspend, finished in a wide range of industry-leading Camira fabrics or used in its raw material for a cost-effective solution.

## TECHNICAL DATA

**FIRE SPECIFICATION:** ASTM E84-18a CLASS A  
**COMPOSITION:** 50mm PET PANELS  
**DENSITY:** 8KG/M2  
**ACOUSTIC PERFORMANCE:** CLASS A

## RECOMMENDED SPACING

We recommend a minimum of 75mm spacing from the ceiling.



"We exist to design, manufacture and supply the future of interior acoustic products."

 [sales@techmaterials.co.uk](mailto:sales@techmaterials.co.uk)

 [www.techmaterials.co.uk](http://www.techmaterials.co.uk)

 +0044 01952 947390

 Telford, Shropshire, TF7 4QP

# WAVE



## 04 | WAVE

Wave hanging baffles are a unique high-quality Class A acoustic absorber that adds interest to your acoustic design. Wave baffles are manufactured with a MTech foam core and Blazer or Blazer Lite fabric finish. Wave can be suspended horizontally and vertically using Tech Materials corkscrew fixing kits. Baffles are excellent at battling reverberation and echo and should be suspended evenly apart at a distance of 300mm to maximise sound absorption.

### STANDARD SIZE

1500mm X 300mm X 50mm

### STANDARD SHAPES

01. Wave



### TECHNICAL DATA

**FIRE SPECIFICATION:** DIN EN 13501-1:2010 C - s2, d0

**COMPOSITION:** BASF BASOTECT G FOAM / FABRIC

**DENSITY:** 9KG/M3

**ACOUSTIC PERFORMANCE:** CLASS A

### RECOMMENDED SPACING

We recommend a 300mm spacing from the ceiling and each other.



"We exist to design, manufacture and supply the future of interior acoustic products."



[sales@techmaterials.co.uk](mailto:sales@techmaterials.co.uk)



+0044 01952 947390



[www.techmaterials.co.uk](http://www.techmaterials.co.uk)



Telford, Shropshire, TF7 4QP

CONTACT US FOR COLOUR OPTIONS

# PANGOLIN



CONTACT US FOR COLOUR OPTIONS

## 06 | PANGOLIN

The Pangolin is a unique class A acoustic lattice designed for auditoriums, stairwells and high ceilings. The modular structure funnels sound through the scales and into the claws, offering a design led acoustic solution to reverberation and echo. Design inspiration has been taken from the endangered mammal with the same name. In return we are trying to raise awareness and donate towards their protection.

### STANDARD SIZE

1400mm X 1400mm X 1500mm (DROP)

### FIXINGS

4 X TECH LOOP FIXINGS / UNIT

FITTING INSTRUCTIONS AVAILABLE ON REQUEST

### TECHNICAL DATA

FIRE SPECIFICATION: EN13501-:2007+A1:2009 B - s1, d0

COMPOSITION: 100% RECYCLABLE PET FIBRE

WEIGHT: APPROX 13KG/ UNIT

ACOUSTIC PERFORMANCE: CLASS A

### RECOMMENDED SPACING

We recommend a 300mm spacing from the ceiling.



"We exist to design, manufacture and supply the future of interior acoustic products."

 [sales@techmaterials.co.uk](mailto:sales@techmaterials.co.uk)

 [www.techmaterials.co.uk](http://www.techmaterials.co.uk)

 +0044 01952 947390

 Telford, Shropshire, TF7 4QP

# CHEVRON



## 07 | CHEVRON

The Chevron suspended acoustic absorber has taken the design of a traditional hanging raft and improved its technical performance and design impact. Chevron lattice is an excellent solution for open plan workspaces, board rooms, rest areas and restaurants. Get creative with your interior design and ask us to produce your Chevron in dual colour, printed panels and or solid colour throughout. The design possibilities are endless!

### STANDARD SIZE

1200mm X 2700mm X 300mm (DROP)  
1200mm X 2400mm X 300mm (DROP)

### FIXINGS

6 X TECH LOOP FIXINGS / UNIT  
FITTING INSTRUCTIONS AVAILABLE ON REQUEST

### TECHNICAL DATA

FIRE SPECIFICATION: EN13501-:2007+A1:2009 B - s1, d0  
COMPOSITION: 100% RECYCLABLE PET FIBRE  
WEIGHT: APPROX 12.5KG/ UNIT  
ACOUSTIC PERFORMANCE: CLASS A

### RECOMMENDED SPACING

We recommend a 300mm spacing from the ceiling.



"We exist to design, manufacture and supply the future of interior acoustic products."



[sales@techmaterials.co.uk](mailto:sales@techmaterials.co.uk)



+0044 01952 947390



[www.techmaterials.co.uk](http://www.techmaterials.co.uk)



Telford, Shropshire, TF7 4QP

# ZONE



## 08 | ZONE

The Alpha Zone suspended acoustic absorber has taken a traditional hanging raft and zoned in on maximum acoustic absorption. We have enhanced the acoustic properties by angling the cross sections towards the noise source. The Zone lattice, funnels and defuses sound energy through each fin of the absorber. Zone is an excellent solution for open plan offices, workspaces, large meeting rooms, rest areas and restaurants.

### STANDARD SIZE

1550mm X 2400mm X 300mm (DROP)

### FIXINGS

6 X TECH LOOP FIXINGS / UNIT

FITTING INSTRUCTIONS AVAILABLE ON REQUEST

### TECHNICAL DATA

FIRE SPECIFICATION: EN13501-:2007+A1:2009 B - s1, d0

COMPOSITION: 100% RECYCLABLE PET FIBRE

WEIGHT: APPROX 17KG/ UNIT

ACOUSTIC PERFORMANCE: CLASS A

### RECOMMENDED SPACING

We recommend a 300mm spacing from the ceiling.



"We exist to design, manufacture and supply the future of interior acoustic products."



[sales@techmaterials.co.uk](mailto:sales@techmaterials.co.uk)



+0044 01952 947390



[www.techmaterials.co.uk](http://www.techmaterials.co.uk)



Telford, Shropshire, TF7 4QP



# POLO



CONTACT US FOR COLOUR OPTIONS

## STANDARD SIZE

- 1200mm DIA x 600mm IN x 50mm T
- 600mm DIA x 100mm IN x 50mm T
- 1200mm DIA x 600mm IN x 25mm T
- 600mm DIA x 100mm IN x 25mm T

## STANDARD SHAPES

01. BIG



03. SMALL



## 09 | POLO

The Polo raft is perfect for busy ceilings with sprinklers and smoke systems. They are commonly installed alongside Echo-Geo rafts to overcome ceiling obstacles and to enhance the acoustic design. Polo hanging rafts are a high-quality Class A acoustic absorber available in 24mm PET / 50mm PET and fabric wrapped Mtech foam. Easy to install with the option of a single suspension point.

## TECHNICAL DATA

**FIRE SPECIFICATION:** DIN EN 13501-1:2010 C - s2, d0  
**COMPOSITION:** BASF BASOTECT G FOAM / FABRIC  
**DENSITY:** 9KG/M3  
**ACOUSTIC PERFORMANCE:** CLASS A

## RECOMMENDED SPACING

We recommend a minimum of 75mm spacing from the ceiling.



"We exist to design, manufacture and supply the future of interior acoustic products."



[sales@techmaterials.co.uk](mailto:sales@techmaterials.co.uk)



+0044 01952 947390



[www.techmaterials.co.uk](http://www.techmaterials.co.uk)



Telford, Shropshire, TF7 4QP

# LOTUS



## 10 | LOTUS

The Alpha Lotus suspended acoustic absorber has been designed for when space is premium, but creativity is a must. These beautiful absorbers can be used in singles or grouped to create a colourful ceiling bouquet. Choose from fixing direct to the ceiling or suspended if space permits. Lotus absorbers are available in dual colours and or solid colour throughout.

### STANDARD SIZE

500mm X 500mm X 350mm (DROP)

### FIXINGS

3 X TECH LOOP FIXINGS / UNIT

FITTING INSTRUCTIONS AVAILABLE ON REQUEST

### TECHNICAL DATA

FIRE SPECIFICATION: EN13501-:2007+A1:2009 B - s1, d0

COMPOSITION: 100% RECYCLABLE PET FIBRE

WEIGHT: APPROX 12.5KG/ UNIT

ACOUSTIC PERFORMANCE: CLASS A / SET OF 6

### RECOMMENDED SPACING

We recommend a 300mm spacing from the ceiling.



"We exist to design, manufacture and supply the future of interior acoustic products."



[sales@techmaterials.co.uk](mailto:sales@techmaterials.co.uk)



+0044 01952 947390



[www.techmaterials.co.uk](http://www.techmaterials.co.uk)



Telford, Shropshire, TF7 4QP

# ALPHA RAFT



CONTACT US FOR COLOUR OPTIONS



## 11 | ALPHA RAFT

### STANDARD SHAPES

01. CIRCLE    02. RECTANGLE    03. CROSS



04. HEX    05. TRIANGLE    06. SQUARE



### OPTIONAL: PRINTED

### FIXINGS

Tech Loop Fixings  
Fitting instructions available on request

Alpha Rafts help battle reverberation and echo from above. Add a new dimension to your interior space by suspending a choice of 6 geometric shapes and 14 solid colours in an endless amount of formations. Alpha Rafts are manufacture using 24mm PET panels in either a combination of 2 colours or a solid colour throughout. The adjustable suspension system allows you to suspend the rafts directly above the noise source delivering an excellent, finely tuned acoustic solution.

### TECHNICAL DATA

**FIRE SPECIFICATION:** EN13501-:2007+A1:2009 B - s1, d0  
**COMPOSITION:** 100% RECYCLABLE PET FIBRE  
**WEIGHT:** APPROX 4.8KG M2  
**ACOUSTIC PERFORMANCE:** CLASS C-B

### RECOMMENDED SPACING

We recommend a 300mm spacing from the ceiling.



"We exist to design, manufacture and supply the future of interior acoustic products."



[sales@techmaterials.co.uk](mailto:sales@techmaterials.co.uk)



+0044 01952 947390



[www.techmaterials.co.uk](http://www.techmaterials.co.uk)



Telford, Shropshire, TF7 4QP